

PHEROCON[®]

CODLING MOTH SEXING

(By microscope hand lens or naked eyes)

FEMALE CM

Pointed tip, with hairy, copper-brown, heart-shaped oviposition PAD



PAD

MALE CM

BULLET-BLUNT tip with scales. Squeeze: claspers extend and open

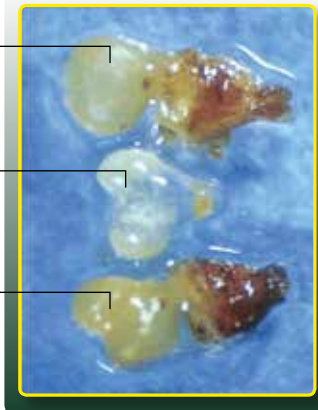


DISSECTED FEMALE ABDOMINAL TIPS WITH BURSA-POUCH

Single Mated, inflated bursa-pouch with spermatophore inside

Spermatophore (Dissected Out) bi-lobed hard plastic-like, clear milky-white

Twice Mated with four lobes extending the pouch



Twice Mated with large multiple-lobed, inflated bursa-pouch, hard to touch due to spermatophore within

Single Mated, bi-lobe inflated bursa-pouch

Virgin-Unmated, with bursa-pouch un-inflated, soft and orange brown color

